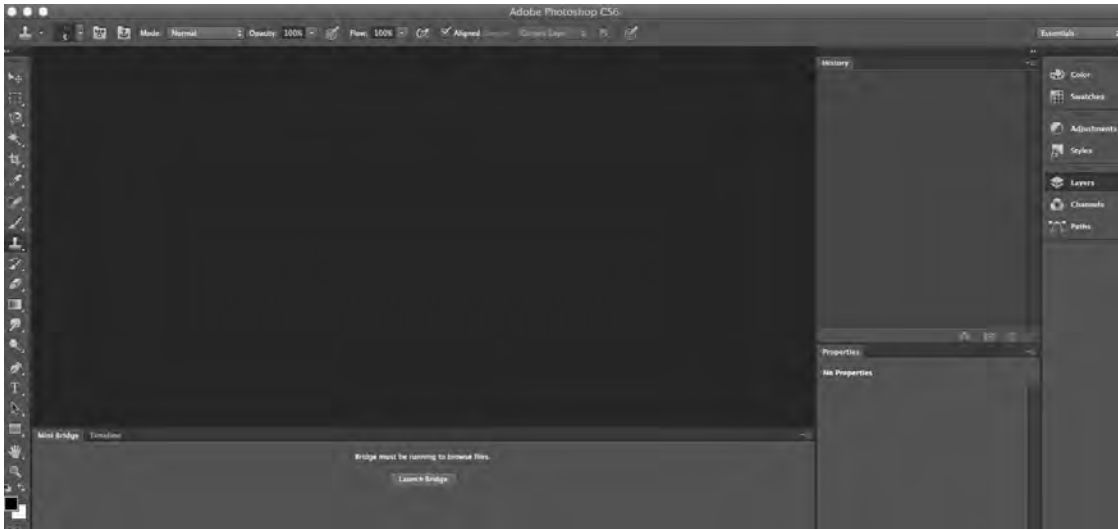




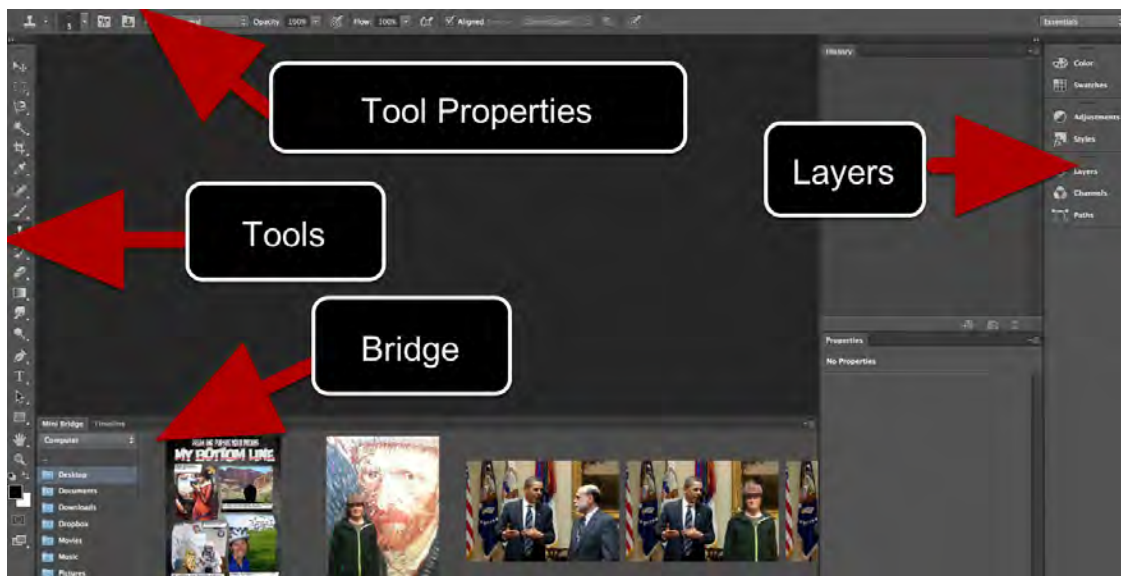
## Photoshop Change Background

This how to will walk you through how to insert yourself into another image.

### Open Photoshop and Launch Bridge

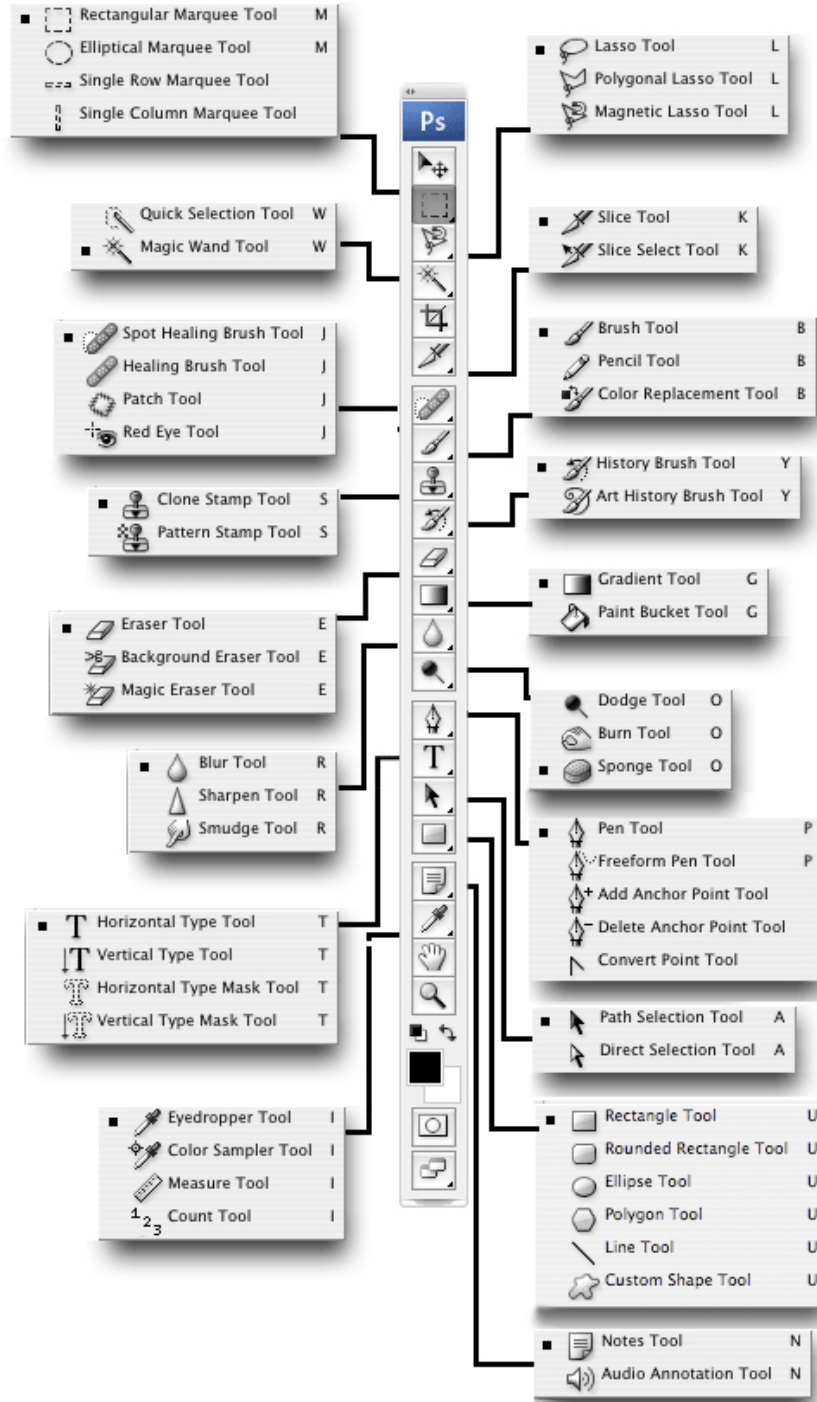


### Become familiar with your tools and windows.





# Photoshop Tools Explained



<http://www.photoshopsupport.com/photoshop-blog/dl-blog/tool-chart-1/photoshop-tool-chart.gif>



Open up two images from the bridge, your picture and the picture of Obama



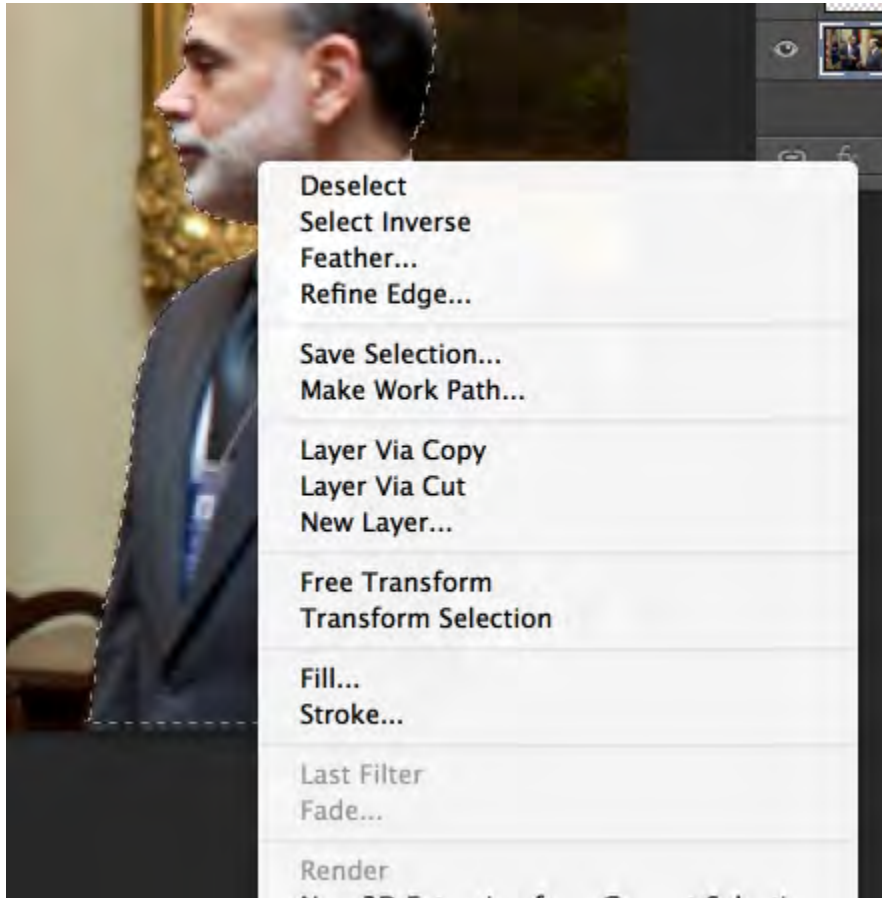
Use the Magnetic Lasso tool and select Bernanke



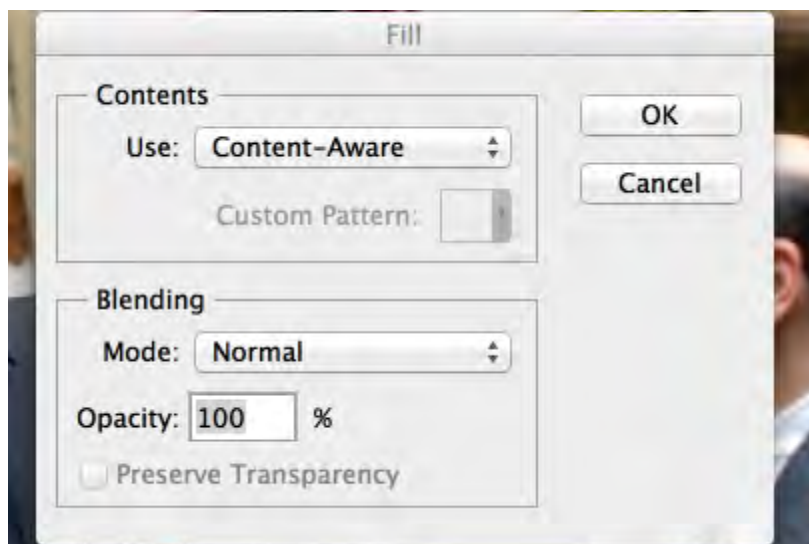
Be sure it is a tight fit.



**Right Click on the selected image and choose Fill**



**Choose content aware**

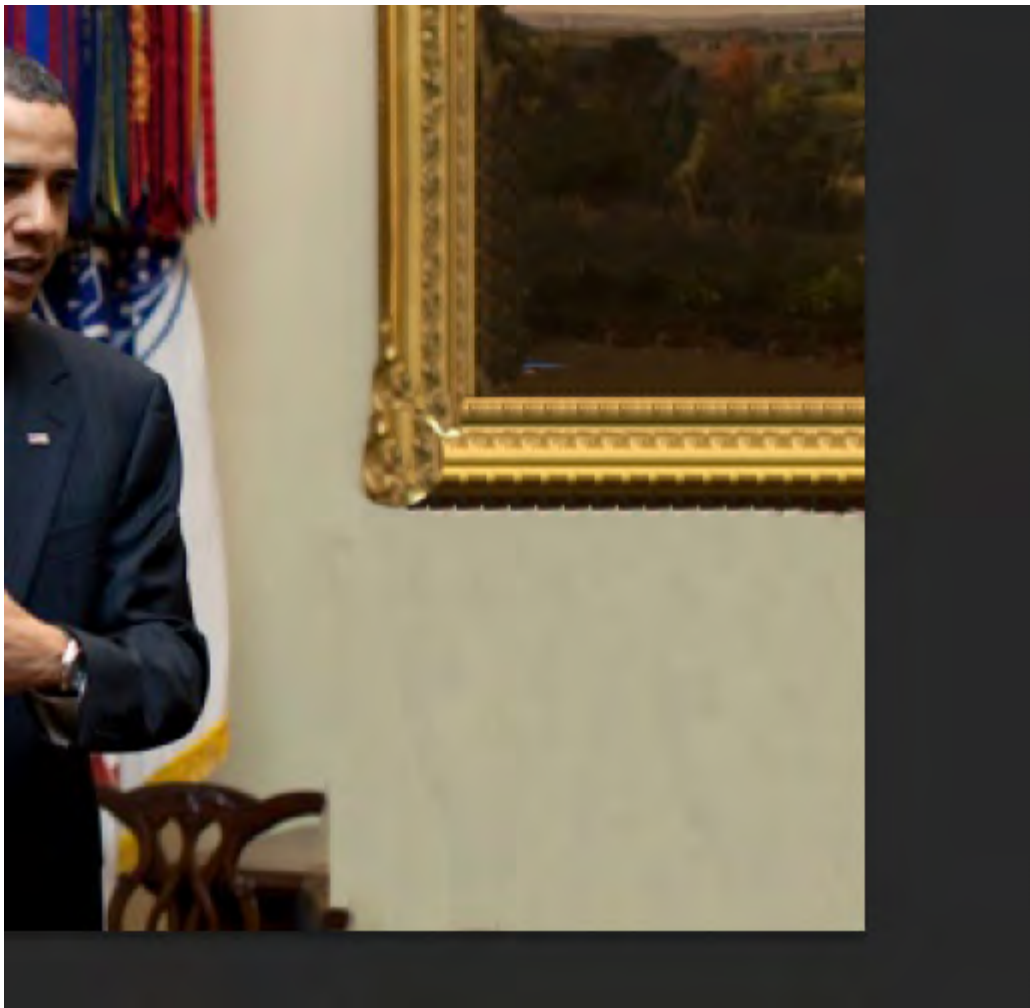




Now use the clone tool to clean up the picture

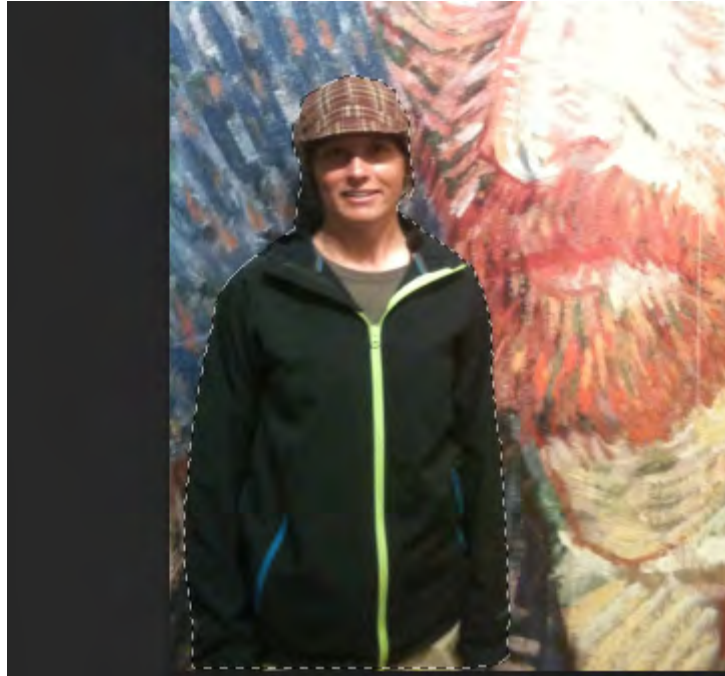


Finished Image after using the clone tool.



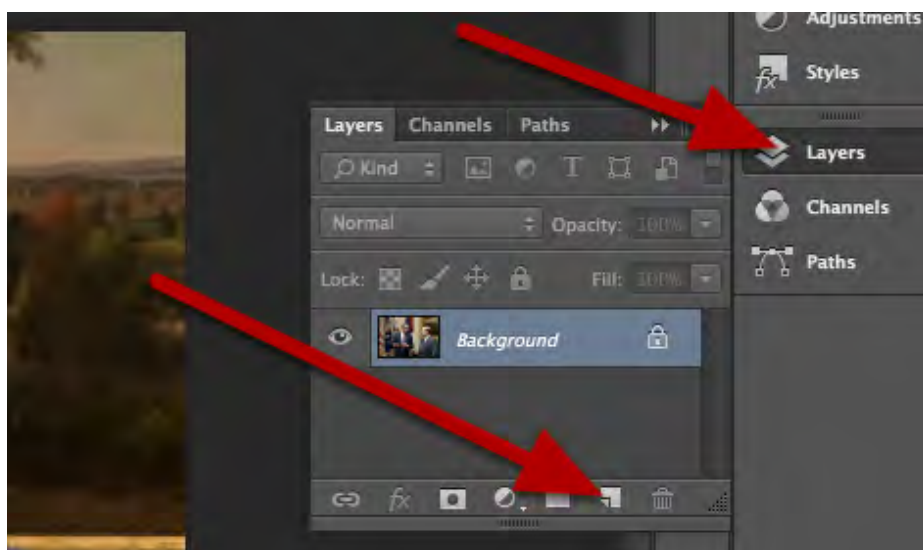


**Use the magnetic lasso tool to select around yourself.**



Using the magnetic lasso tool draw a shape around the person. Use the delete button to remove a point that does not match what you want selected.

**Open the Obama image and create a new layer.**



Press the picture of the paper to create a new layer.



Copy and paste your selection into the Obama Image on the new Layer



Go back to your picture and copy the selection. Paste it into the layer for the Obama image.



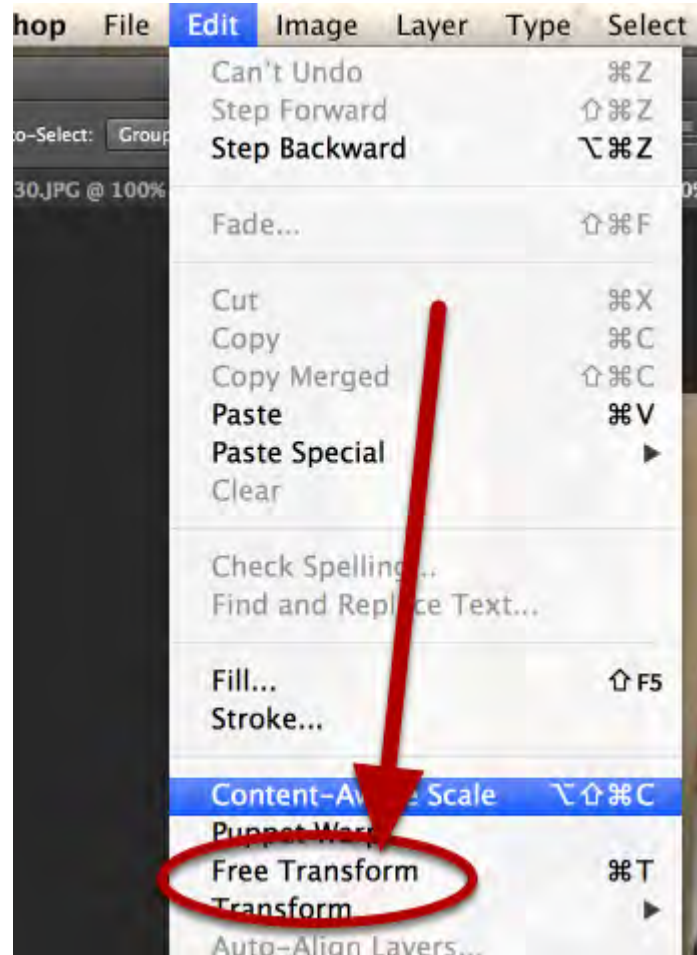
Use the eraser tool to clean up edges around yourself.







Use Edit Free Transform to resize your image





Hold down the shift key to resize and then move the image to the appropriate place.



Double click on the image when you are done to put it into place.



Use the Dodge and Burn tool and the smudge tool to match the lighting.

